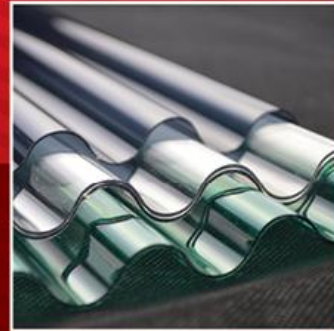
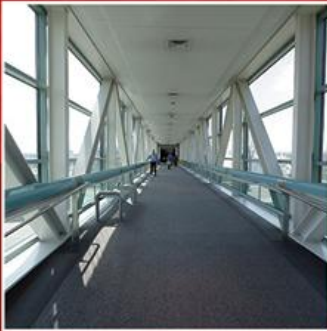
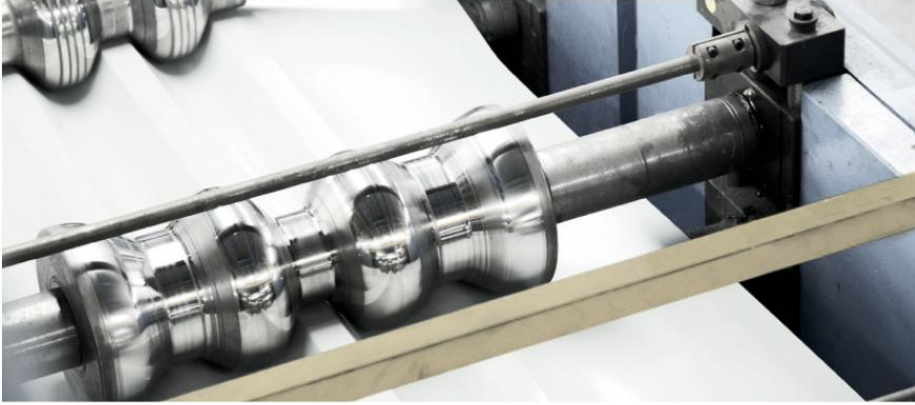


# Penta

AMBALAJ SANAYİ TİCARET LTD. ŞTİ.





## ABOUT US

Penta was established in 1995 and leading companies in plastic sector and with polycarbonate production line to experience success

During this time, we serve domestic users as well as through export foreign customers. Ever-growing of domestic and international dealership network, continues its way through new investments in the sector by closing the deficit of plastic sector.

Penta Plastic, which was established in 2007 in own structure, has a one of the first production line of solid Kayseri and in Turkey.

We provide innovative and state of the art solutions, More powerful and high-quality machine park, a brand new service offering "always superior and quality service" went the slogan. Being together with you to meet our customers' needs by producing appropriate solutions to sectors that cater to the happiness and live rightly proud of.



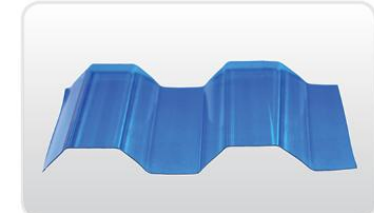
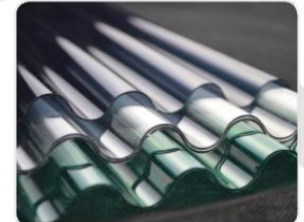
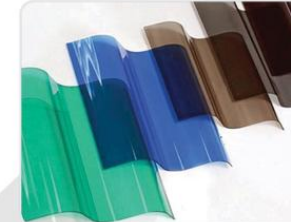
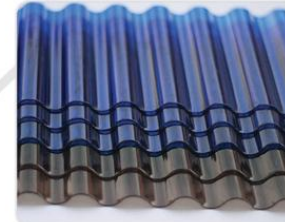
## Rainbow Corrugated Polycarbonate Sheets

### Product information:

PC Corrugated Solid Sheet is one of the leading materials of choice for greenhouse roofing due to its unique combination of characteristics. It is a high quality, lightweight, rigid corrugated polycarbonate sheet, with excellent impact resistance, superior clarity, versatility, and weather resistance.

### The Advantages of Corrugated Sheets:

- Lightweight and rigid with excellent impact resistance.
- Corrugated polycarbonate sheet is light-weight and virtually unbreakable
- Superior clarity, versatility, and weather resistance.
- UV inhibitors which prevent degradation and yellowing and protect crops from harmful rays of the sun.
- Built-in condensation control eliminates condensation drop formation, while retaining its high level of transparency.
- Easy to install



### Colors and Forming:

Corrugated polycarbonate sheets are available in standard colors of clear, bronze and white. This plastic is highly flexible and can be easily cold formed and on-site without risk of cracking or splintering when fabricated.

### Easy, safe installation

These plastic sheets offer long-lasting aesthetics in all public applications and are 16-times lighter than glass, making them easy to lift and maneuver during installation. They are also fire retardant, self-extinguishing and offer excellent insulation properties, which generate savings in utility bills, global energy use, and overall peace of mind.

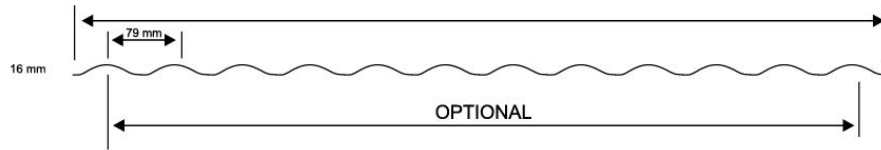
**Sinus Solid Corrugated Sheet Large S Form**



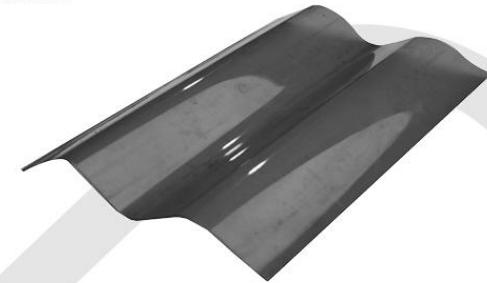
**Sinus Solid Corrugated Sheet Large S Form**



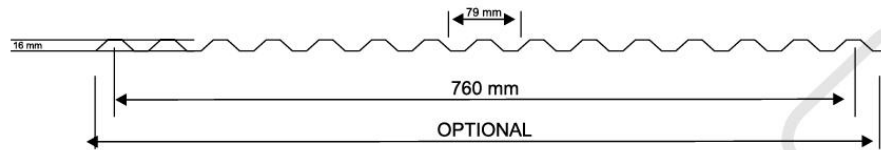
**Sinus Solid Corrugated Sheet Small S Form**



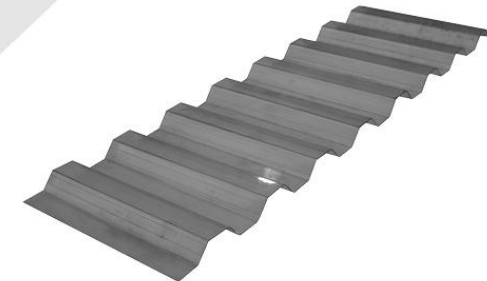
**Sinus Solid Corrugated Sheet Small S Form**



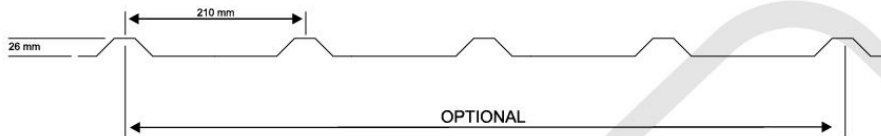
**Greca Form**



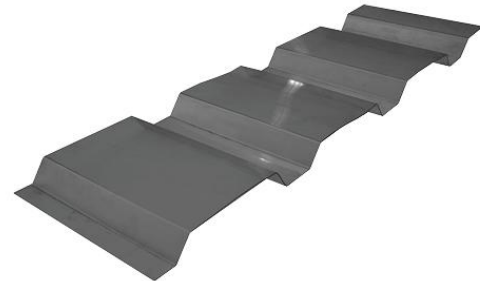
**Greca Form**



**5 Ribs Form**



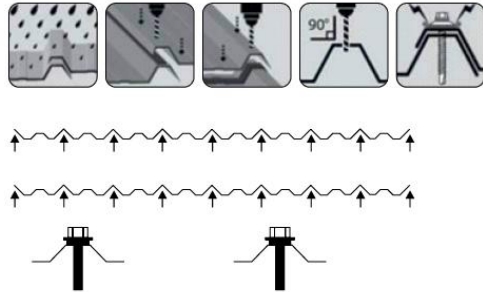
**5 Ribs Form**



**The application range of the sheet**

- The botanical garden, agricultural greenhouse and indoor fish canopy;
- Skylight, kiln, circular arch roof and commercial greenhouses;
- The modern railway station, airport waiting area and channel ceiling;
- Modern bus station, ferry terminals and other public facilities to cover;
- Workshop, warehouse, market in areas such as lighting.

**The installation of the sheet:**



In the wind, the wave plate must be every other peaks and troughs on the skeleton, the spine or rone place should be wave plate on the edge of each peak or trough is fixed on the frame. Wave plate is used for fastening screw or rivet should additional neoprene gasket, if fastening point in the trough, in between the sheet and the skeleton and another rubber mat, make them separated. Plate and the joint application of foam sealing strip ridge cap seal, other end seal the same way.



**RAINBOW  
SINGLE WALL SOLID POLYCARBONATE SHEETS**

A typical feature is being unbreakable like multi-wall polycarbonate sheets. It has a great advantage against the glass by weight ( mm/m<sup>2</sup> = 1,2 kgs ). Which produced ultraviolet and without ultraviolet solid polycarbonate sheets provides a price advantage for indoor and outdoor applications. Cold and hot bending the solid polycarbonate sheets suitable for locations where security is of primary importance is an inevitable material, has an excellent light transmission.

**Specifications:**

- Unbreakable
- Up to 92% light transmittance.
- Suitable for hot and cold bending.
- Due to a layer of UV continuity of color quality.
- Capable not to carry the flame.
- Operate in temperatures from -40 up to +115 C
- Workability, storage, handling and ease of installation.
- Strength against natural conditions,

**Advantages:**

- Strength against natural conditions,
- Unbreakable
- Capable not to carry the flam
- Suitable for hot and cold bending

**Standard Sizes :**

- 2050mmx3050mm

**Thickness:**

- 1.3- 15- mm

**Color:**

- Transparent, white, bronze and more



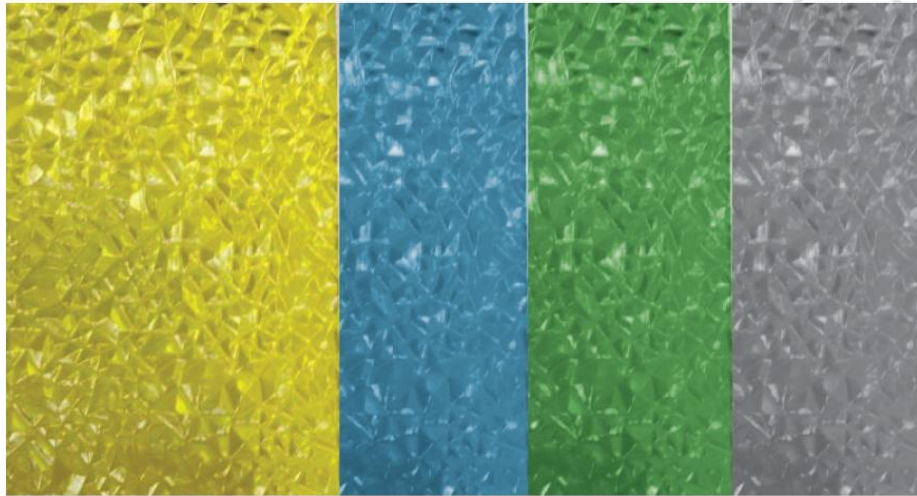
### Polycarbonate Diamond Sheet

PC diamond sheet is produced based on Manufacturing technology of PC solid sheet, changing part mould and processes, so that the surface have physical changes happen, so having optical properties and visual, sensory changes due to the structural changes in the surface.

PC diamond sheet is consistent with the solid on mechanical properties, electrical properties, flame retardant, anti-ultraviolet capability, different from the appearance and optical performance, which through its own surface convex-concave shape, convex-concave density and size so that reach the effect of non-see fuzzy byscattering, transmission.

PC diamond sheet is produced based on Manufacturing technology of PC solid sheet, changing part mould and processes, so that the surface have physical changes happen, so having optical properties and visual, sensory changes due to the structural changes in the surface.

PC diamond sheet is consistent with the solid on mechanical properties, electrical properties, flame retardant, anti-ultraviolet capability, different from the appearance and optical performance, which through its own surface convex-concave shape, convex-concave density and size so that reach the effect of non-see fuzzy byscattering, transmission.



### Product Specifications

Standard size • 2050mmx3050mm (Lenght depends on the customer request)

Available thicknesses: • 1,7- 8 mm

### Machining

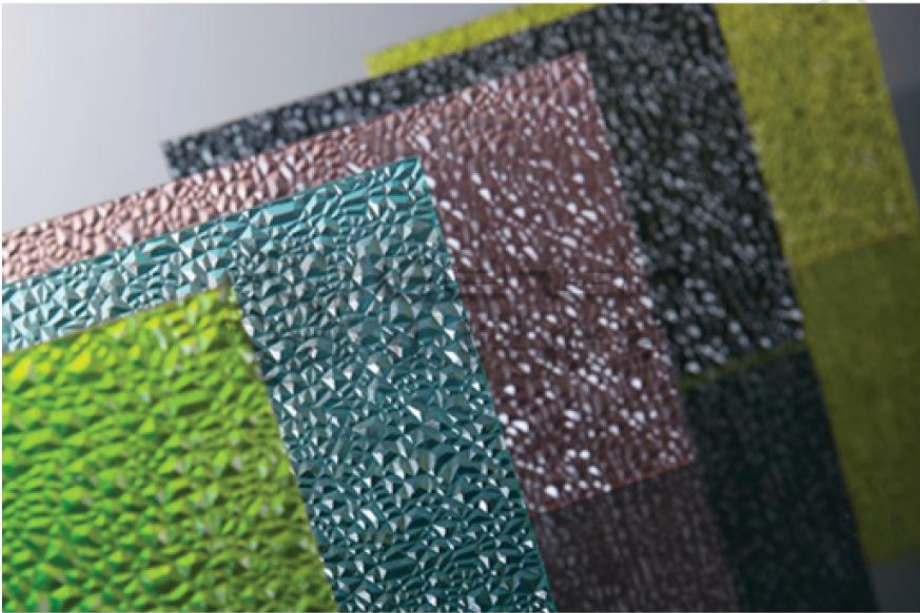
- Easy to bend
- can be formed by applying heat
- Photography coating is possible
- Screwing, drilling and lathing are possible

### Specification

Item	Standard Width (mm)	Thickness(mm)	Weight(kg/ m2)	General Color
PC Diamond Sheet	1220 1560 1820 2050 2100	1,7	1,53	Clear Blue Green Opal Bronze Orange Yellow
		2,0	1,80	
		3,0	2,70	
		4,0	3,60	
		5,0	4,50	
		6,0	5,40	

Remark: 2.mm-3.0mm, 30m length can be in roll. 3.6mm-4.5mm,18m length can be in roll. 5mm or above, packed as sheet.

Note: Special colors and specifications can be customized.





# Penta

AMBALAJ SANAYİ TİCARET LTD. ŞTİ.



ORGANİZE SANAYİ BÖLGESİ 16. CADDE No:3 KAYSERİ/ TÜRKİYE  
TEL : (0 352) 321 17 77 PBX • FAKS : (0 352) 321 22 42  
BILGI@PENTAAMBALAJ.COM.TR  
WWW.PENTAAMBALAJ.COM.TR